

JBL Synthesis URC Driver

Release Notes

Current Version: 1.0.0.5

Introduction

This driver has been designed to provide two-way control of JBL Synthesis via TCP/IP and RS232. The models supported are:

- SDA7120
- SDA2200

The driver provides the the following features:

- Power On/Off
- Mute On/Off
- Auto-shutdown Control

JBL Synthesis Configuration

It is recommended that the Synthesis be installed, configured and tested by a suitably qualified engineer, according to JBL's documentation, prior to integration with this driver.

This driver was tested with firmware version: 1.8.

Driver Installation

A single driver file is included in the release package:

Driver File Name	Description
jbl_synthesis_v1.0.0.5.tcm2	This file contains driver files to control amplifier devices.

The current version included is jbl_synthesis_v1.0.0.5.tcm2.

Adding to Accelerator

Open your existing TC2 System file in URC Accelerator and then import the jbl_synthesis_v1.0.0.5.tcm2 file:

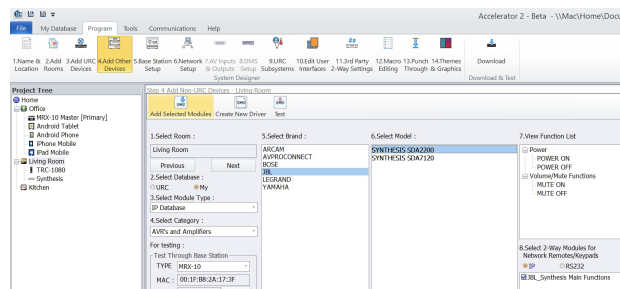
- Choose File -> Import TCM File
- In the Total Control Module Library Import window, locate the jbl_synthesis_v1.0.0.5.tcm2 file and click **Open**.
- From the **Import Total Control Module window that appears**, choose **Import**.

Once the driver has been imported, close URC Accelerator and then reopen it to ensure that the driver has been picked up properly by the driver database.

Adding the Driver

To add the driver:

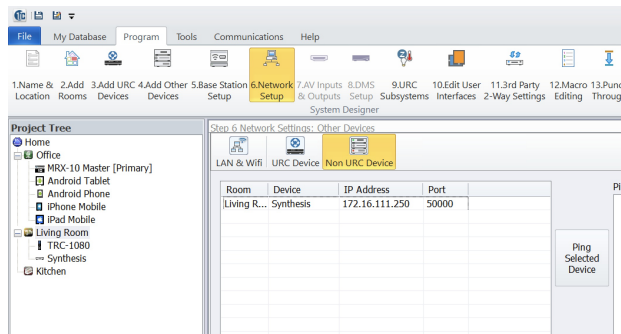
- Select a room to place the driver
- Choose **Program -> 4. Add Other Devices**.
- Ensure **Select Database** is set to **My**.
- Ensure that **Select Module Type** is set to **IP Database**.
- Set Select Category to **AVR's and Amplifiers**.
- Choose **JBL** from the **Select Brand** list.
- From the **Select Model** choose **SDA7120/2200**.
- Click **Add Selected Modules** to add the device to the room.



IP Address

The IP Address of the JBL Synthesis must be provided to the driver.

- Choose **Program -> 6. Network Setup.**
- Select **Non URC Device** tab.
- For each instance of the driver, provide the correct **IP address** in the table.
 - Note that the port should be set automatically but for reference the correct port is **50000**



Macros

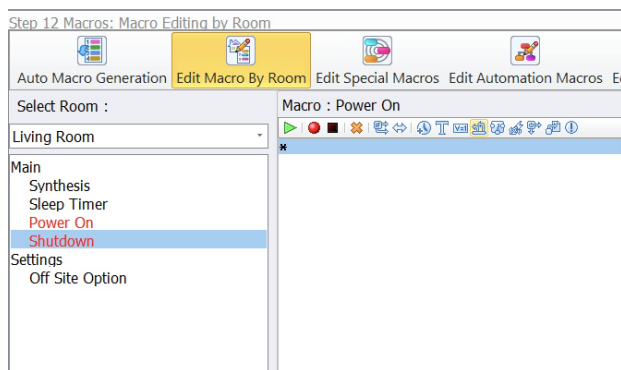
Ensure that system macros are generated for each instance of the driver by configuring **Program -> 12. Macro Editing** appropriately for your system.

Commands

The following commands can be used to control your JBL Synthesis device:

- Auto-shutdown

To add a command to an existing macro select the **Two-way module command** button from the toolbar under **Program -> 12. Macro Editing**:



Give your command a name and select the appropriate command from **Available Command** - see above for the commands available for each model.

2-Way Module Command

Name :
Auto Shutdown

Available Devices :
Synthesis [Living Room]

Available Command :
Auto Shutdown

Parameters

Timeout (mins)
Disabled
20
30
60
120
240

Prev Next

Result

☐ Save the result

Variable : Create Variable

OK Cancel

Finally, select **OK** to add to your macro.

Downloading the Driver

Once you have configured the driver using the steps provided above you can now download the revised system configuration to your URC base station.

User Interfaces

The driver package does not include any pre-designed interfaces.